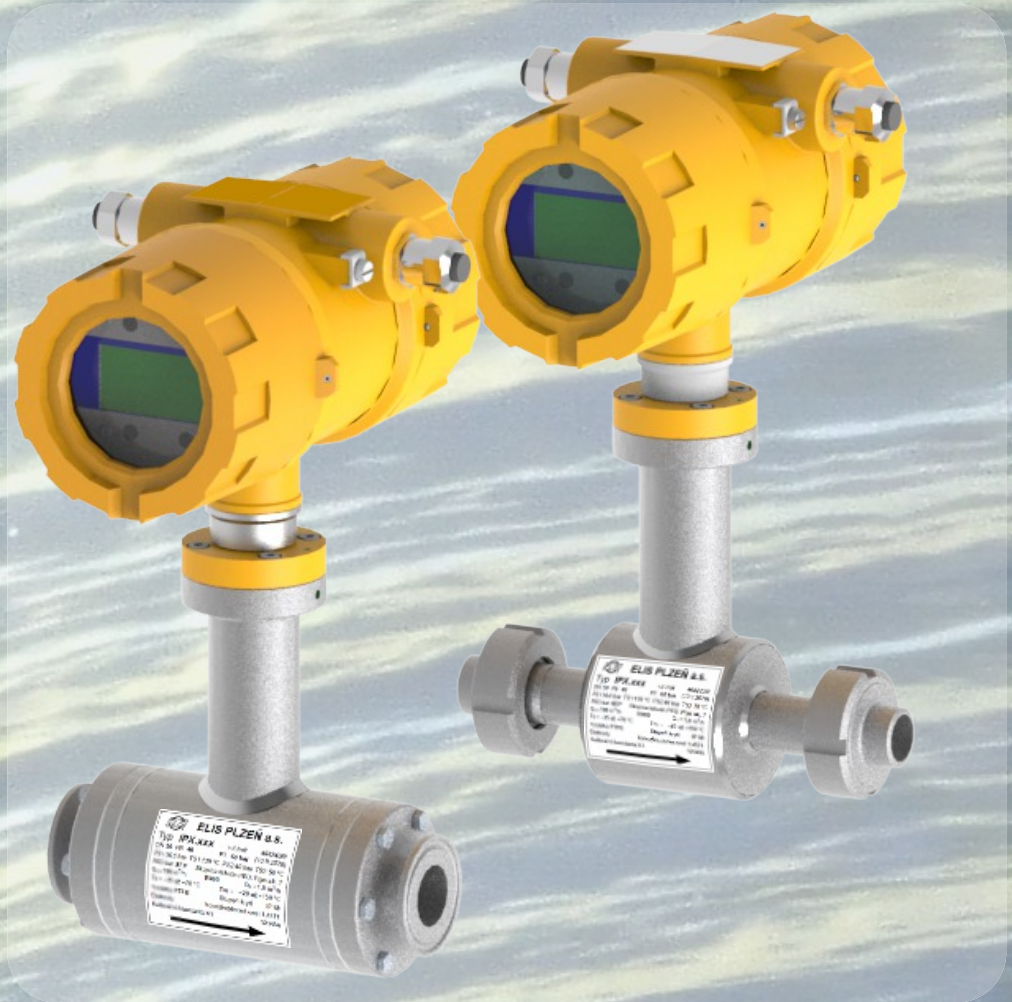




ELIS PLZEŇ a.s.



ELECTROMAGNETIC FLOW METERS FLONET FF50xx

FLONET FF50xx

Electromagnetic flow meters of the type series FLONET FF 50xx are intended for professional flow-rate measurements of electrically conductive fluids in the food-processing and chemical industries. The meters meet most demanding requirements regarding measurement accuracy, long-term parameter stability and hygienic suitability. Flow-rate measurements in both directions are possible. The flow sensor includes no movable mechanical parts and its effect on the fluid flow characteristic or pressure in the connecting piping is negligible. The associated electronic unit supplies power to the sensor unit and processes the flow-rate signals. The meter also has performs internal diagnostics and makes possible selection of physical units for the quantities displayed. The meter has frequency, pulse and current outputs, and can be connected to external electronic devices via the RS 485 MODBUS RTU communication lines.

TECHNICAL PARAMETERS

nominal diameter / size	10 to 100mm / 1/2" to 4" (Clamp)
nominal pressure [bar / psi]	10 / 150
min. conductivity of measured fluid	20µS/cm, on special requirement 5µS/cm
max. temperature of measured fluid	+150°C (302°F)
electrode material	Hastelloy-C4 on special requirement platinum or tantalum
sensor lining	PTFE
connections	Tri Clover (ASME BPE) screw fittings for food-processing applications (DIN 11851)
design version	compact or with remote electronic control unit
measurement accuracy	EN ISO 4064-1 (OIML R 49) *) 2
measurement range	0.025 to 10 m/s (0.08 to 33 ft/s)
outputs	current 4 to 20 mA, insulated 2pc pulse / binary / frequency 0 to 10 kHz, insulated
communication protocol	MODBUS RTU
power source	95 to 250V, 50 to 60Hz (AC) or 24V ± 20% (DC) 19.2 to 28.8V
protection class	IP 67 (IP 68)

*) optional measurement accuracy ± 0.3% for 5 to 100 % of Q₄

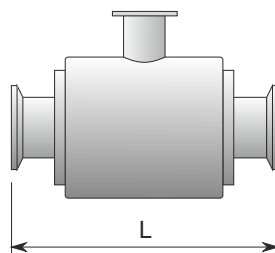
DESIGN VERSION, CONFIGURATION AND TYPE DESIGNATION

type of connection	DN 11851		TRI CLOVER	
design version	COMPACT	REMOTE	COMPACT	REMOTE
type designation	FF5014	FF5015	FF5034	FF5035

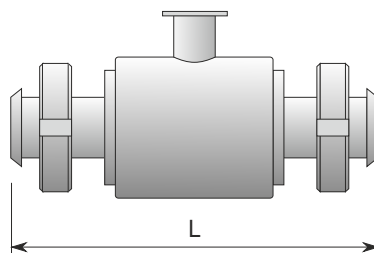
RATED INTERNAL DIAMETER AND SENSOR LENGTH

diameter	L [mm / inch]																	
	10	15	20	25	32	40	50	65	80	100	1/2"	3/4"	1"	1 1/2"	2"	2 1/2"	3"	4"
Tri Clover (ASME BPE)	-	-	-	-	-	-	-	-	-	-	145	145	145	145	145	200	200	200
DIN11851	170	170	170	225	225	225	225	280	280	280	-	-	-	-	-	-	-	-

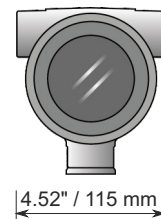
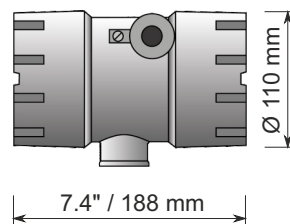
TRI CLOVER



FOOD INDUSTRY THREAD



TRANSMITTER



ELIS PLZEŇ a. s.
LUCNI 425/15, 301 00 PLZEN
CZECH REPUBLIC

Phone: +420 377 517 711
FAX: +420 377 517 722
e-mail: sales@elis.cz
www.elis.cz